

# Data Analysis:

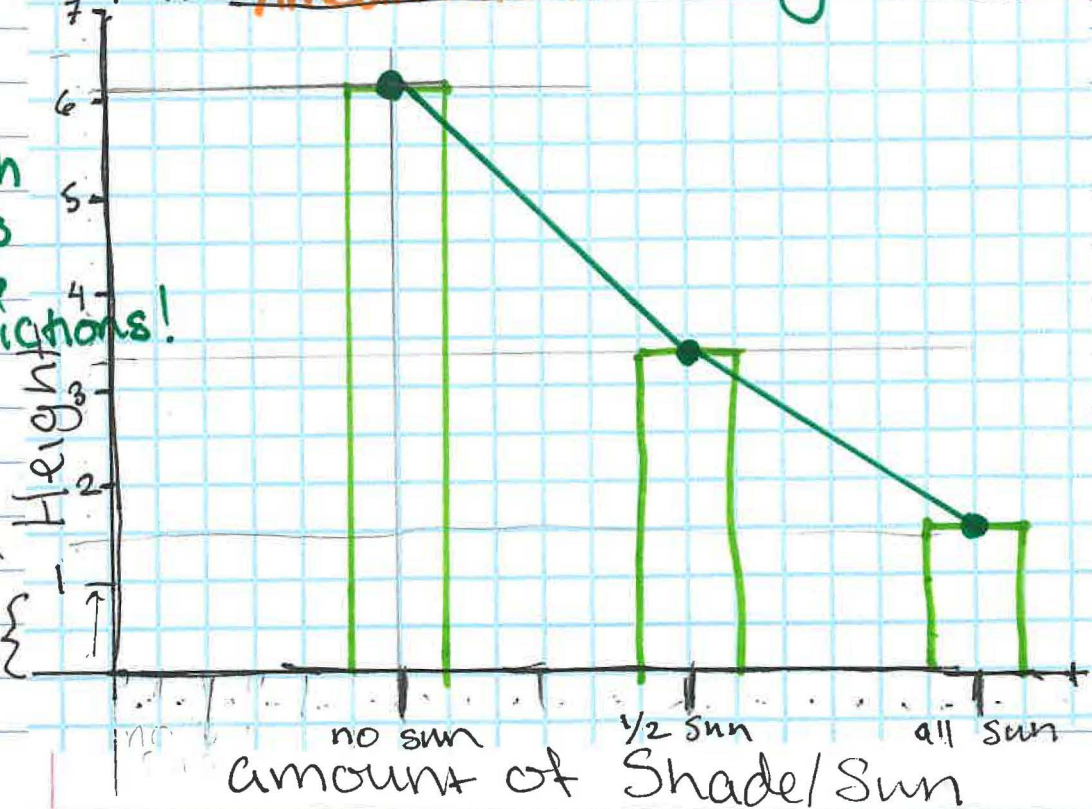
MV: amount of sun	plant 1	plant 2	plant 3	Avg
all sun	1m	+ 1.6m	+ 2m	$\div 3 = 1.5$
50% sun	4m	+ 3.9m	+ 2m	$\div 3 = 3.2$
no sun	6.2m	+ 5m	+ 7m	$\div 3 = 6.1$

How to take avg:

all trials added together & divide by # trials

Round: 1.54, down  
 $\downarrow$  to 1.5  
 $\downarrow$  to .6

Title: Amount of sun vs height



line graph helps make predictions!

interval same!

Fill your space!